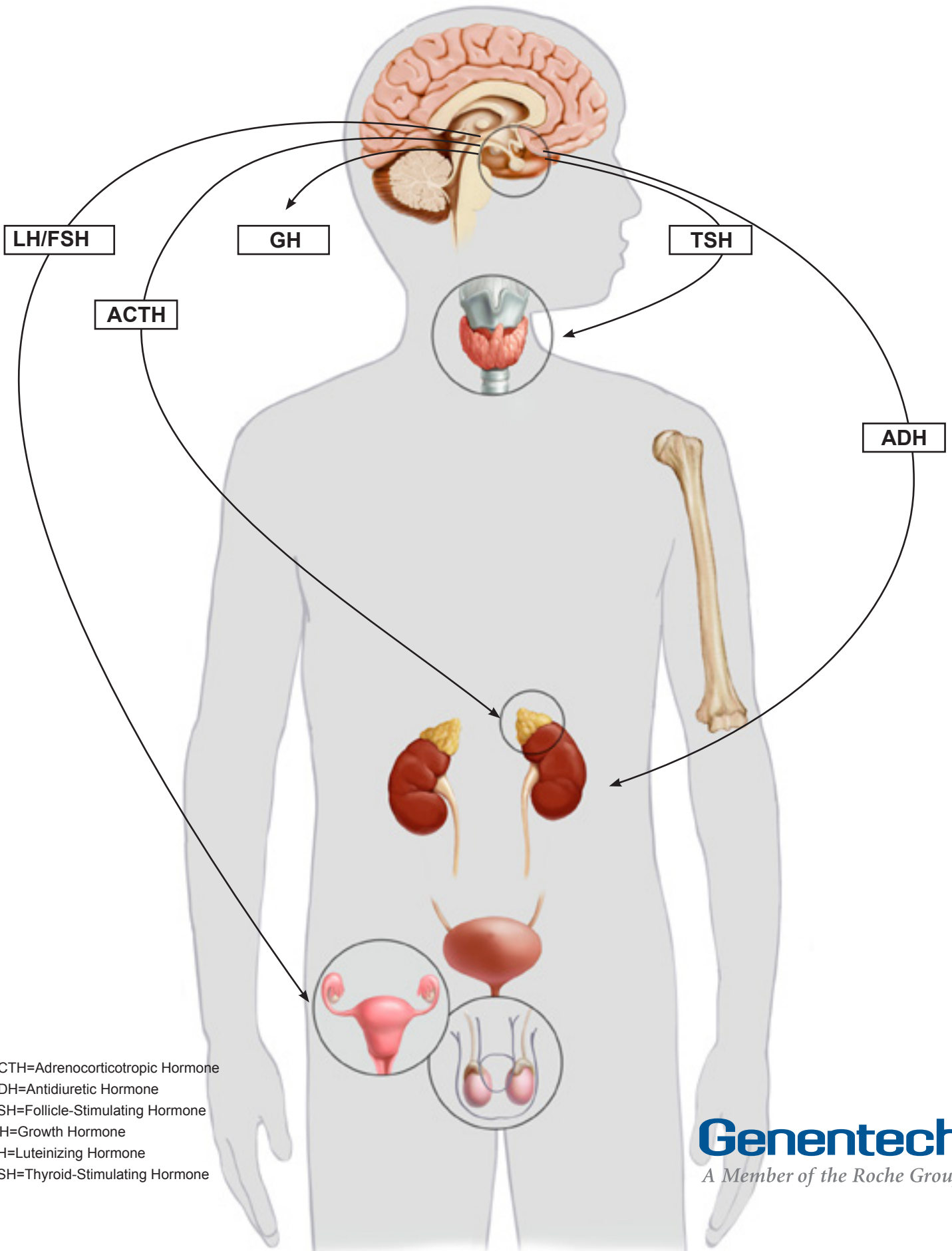
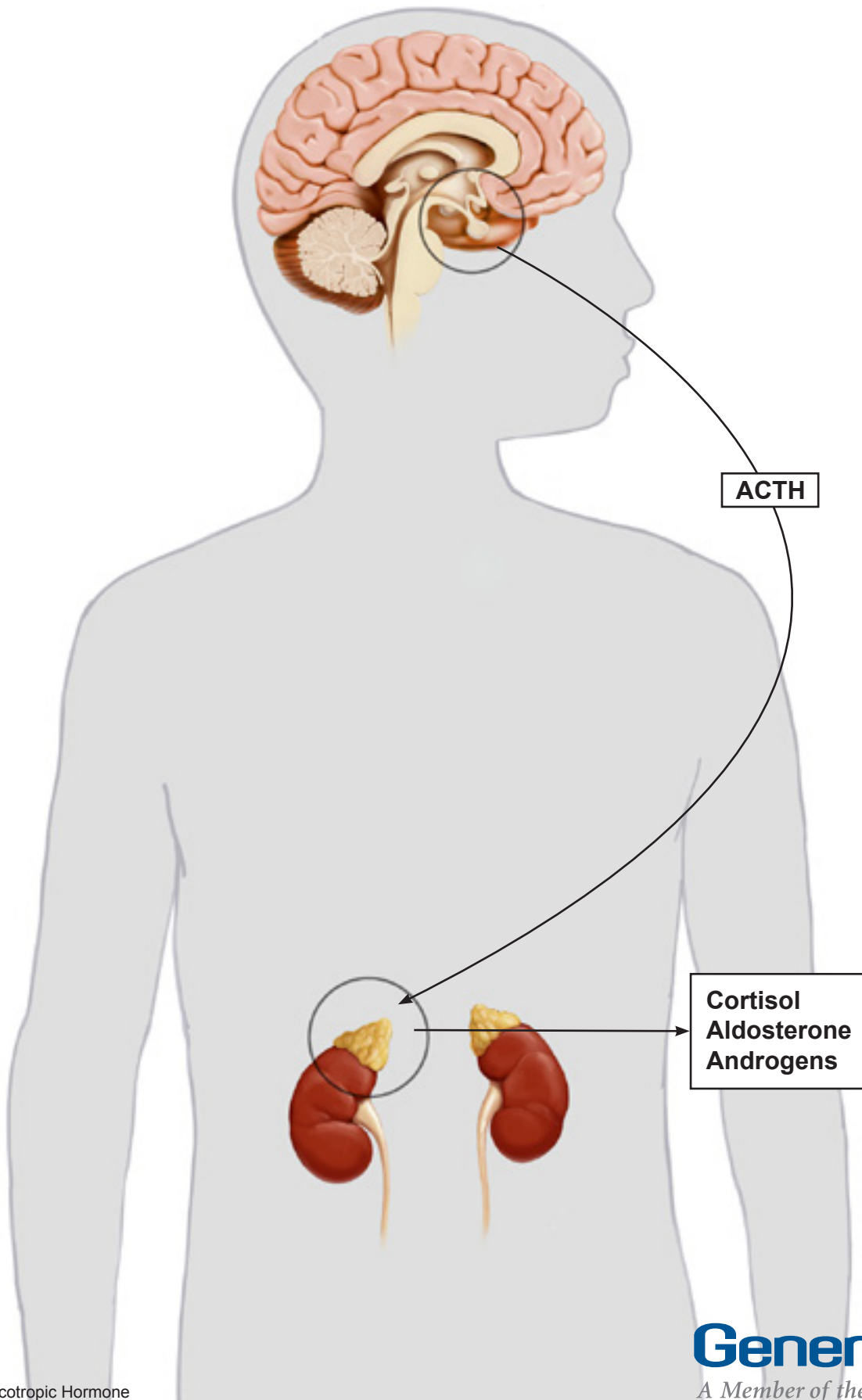


Pituitary Gland¹



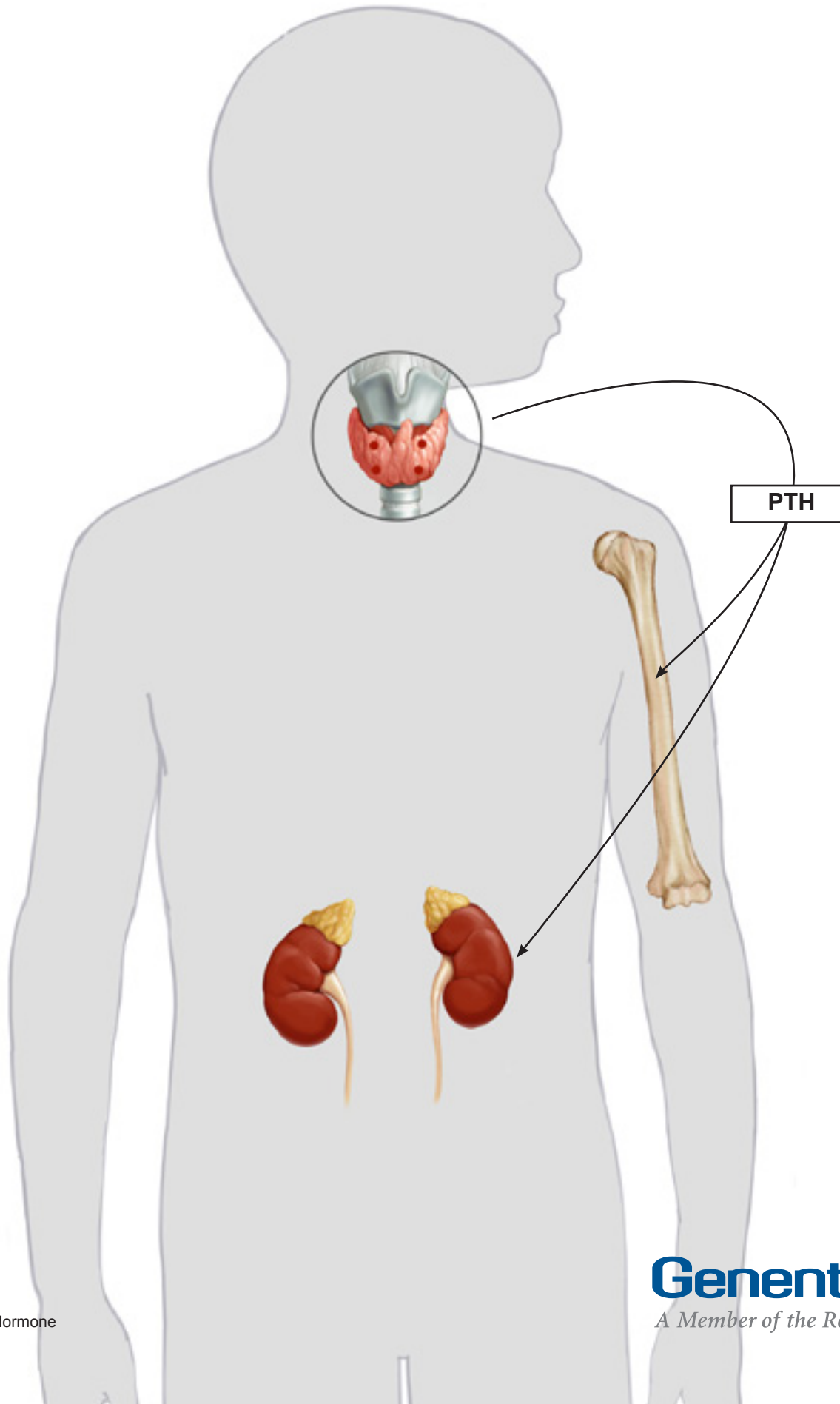
ACTH=Adrenocorticotrophic Hormone
ADH=Antidiuretic Hormone
FSH=Follicle-Stimulating Hormone
GH=Growth Hormone
LH=Luteinizing Hormone
TSH=Thyroid-Stimulating Hormone

Adrenal Gland^{1,2}



ACTH=Adrenocorticotrop Hormone

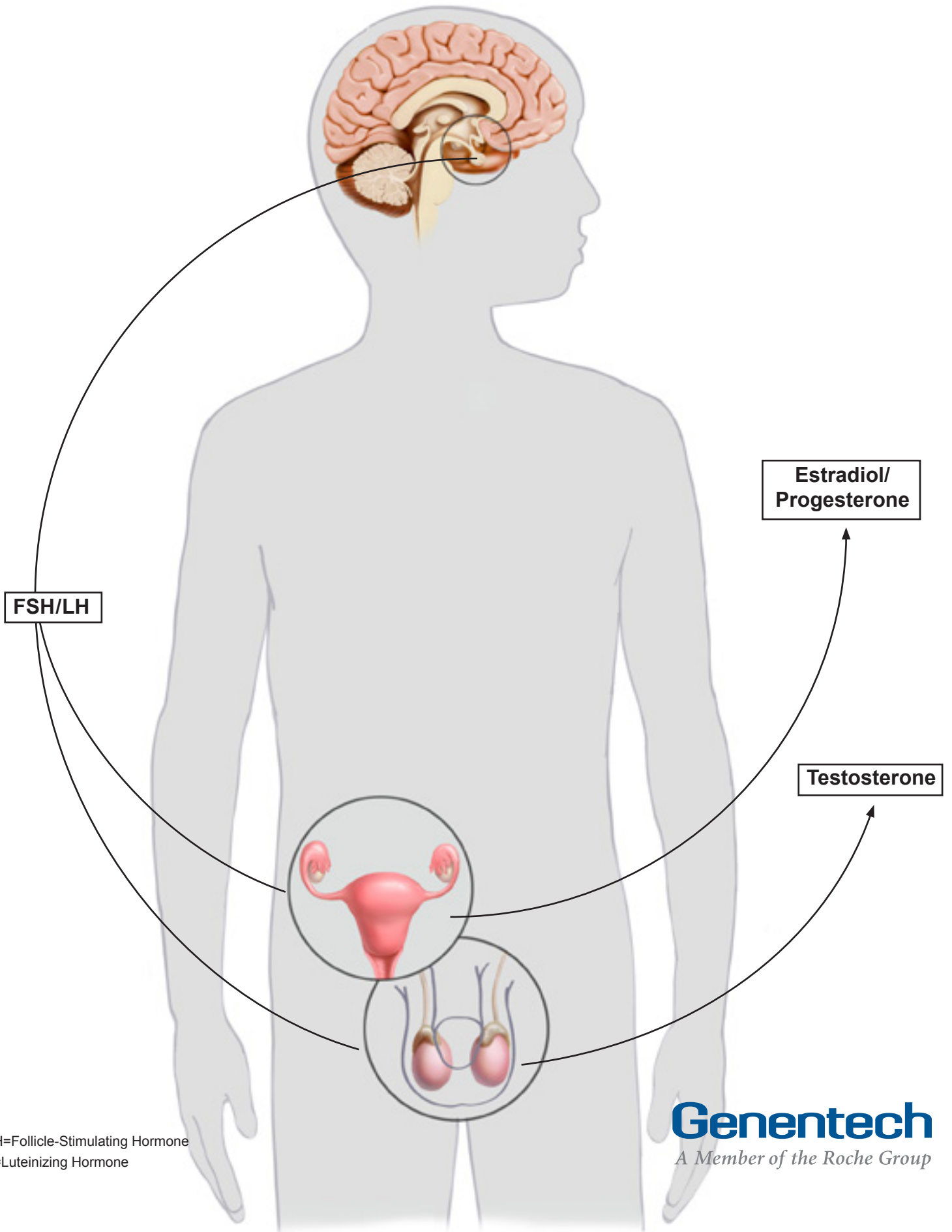
Parathyroid Glands¹



PTH= Parathyroid Hormone

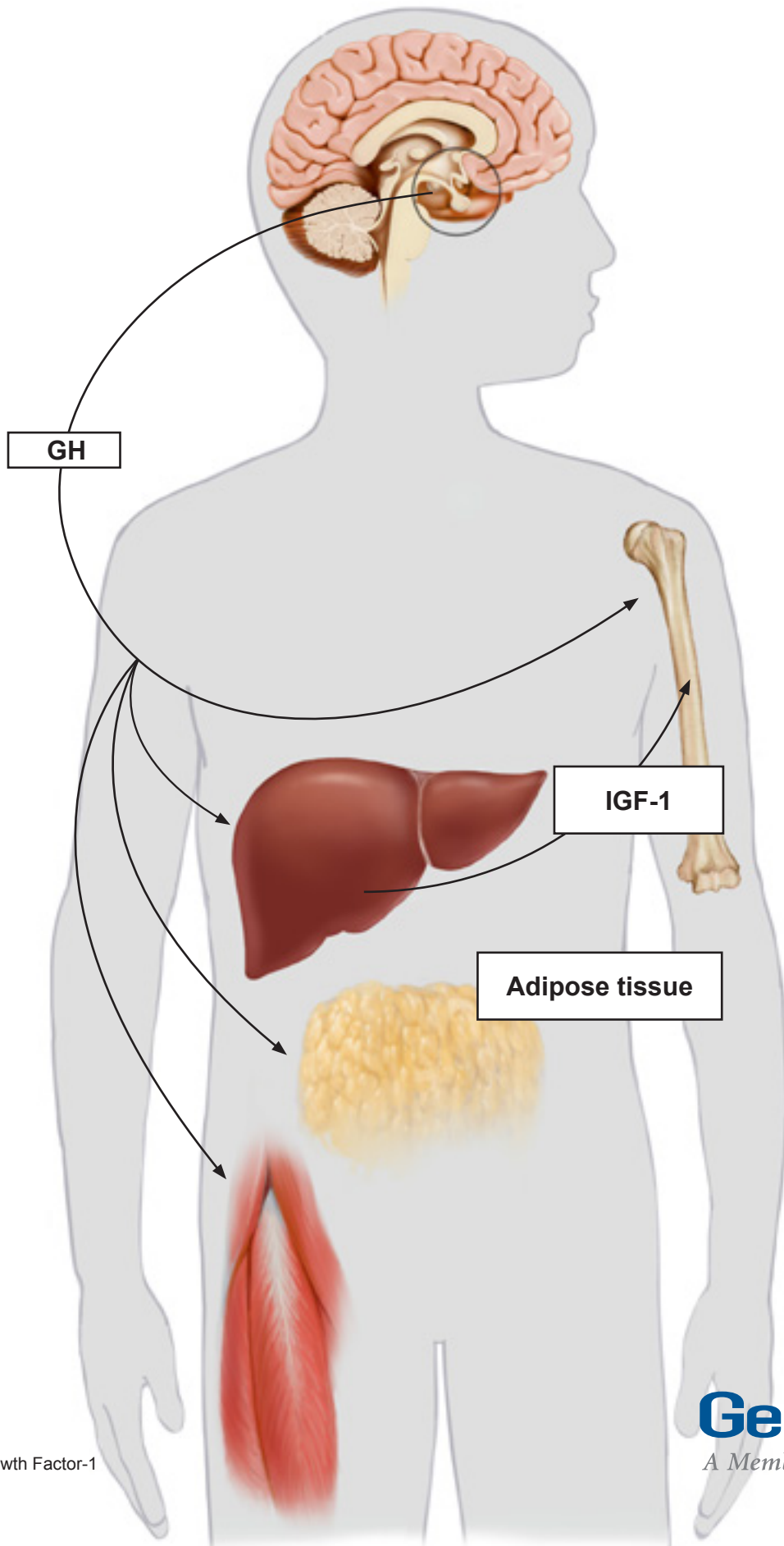
Genentech
A Member of the Roche Group

Ovaries | Testes¹



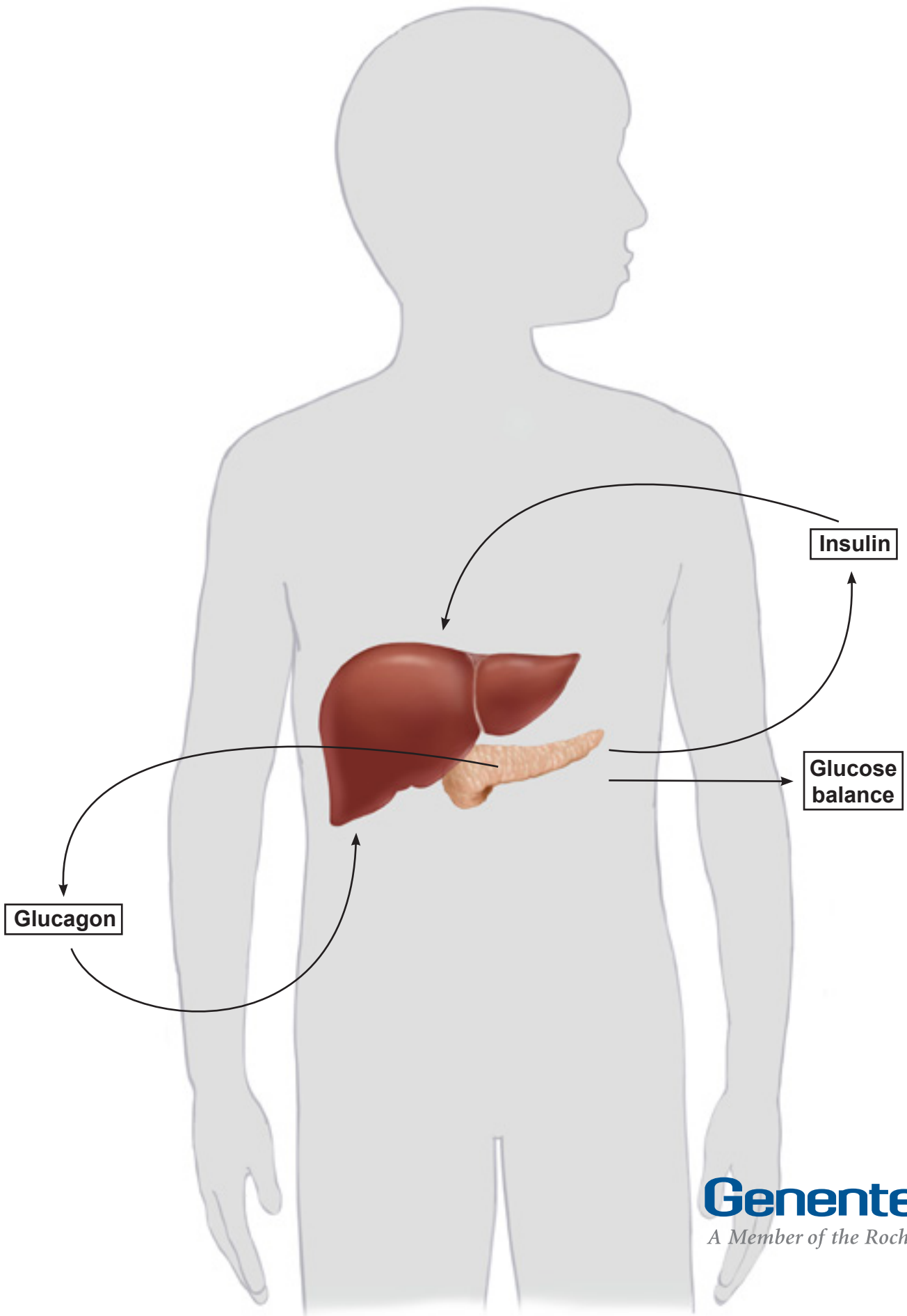
FSH=Follicle-Stimulating Hormone
LH=Luteinizing Hormone

Growth Hormone Pathway^{1,2}

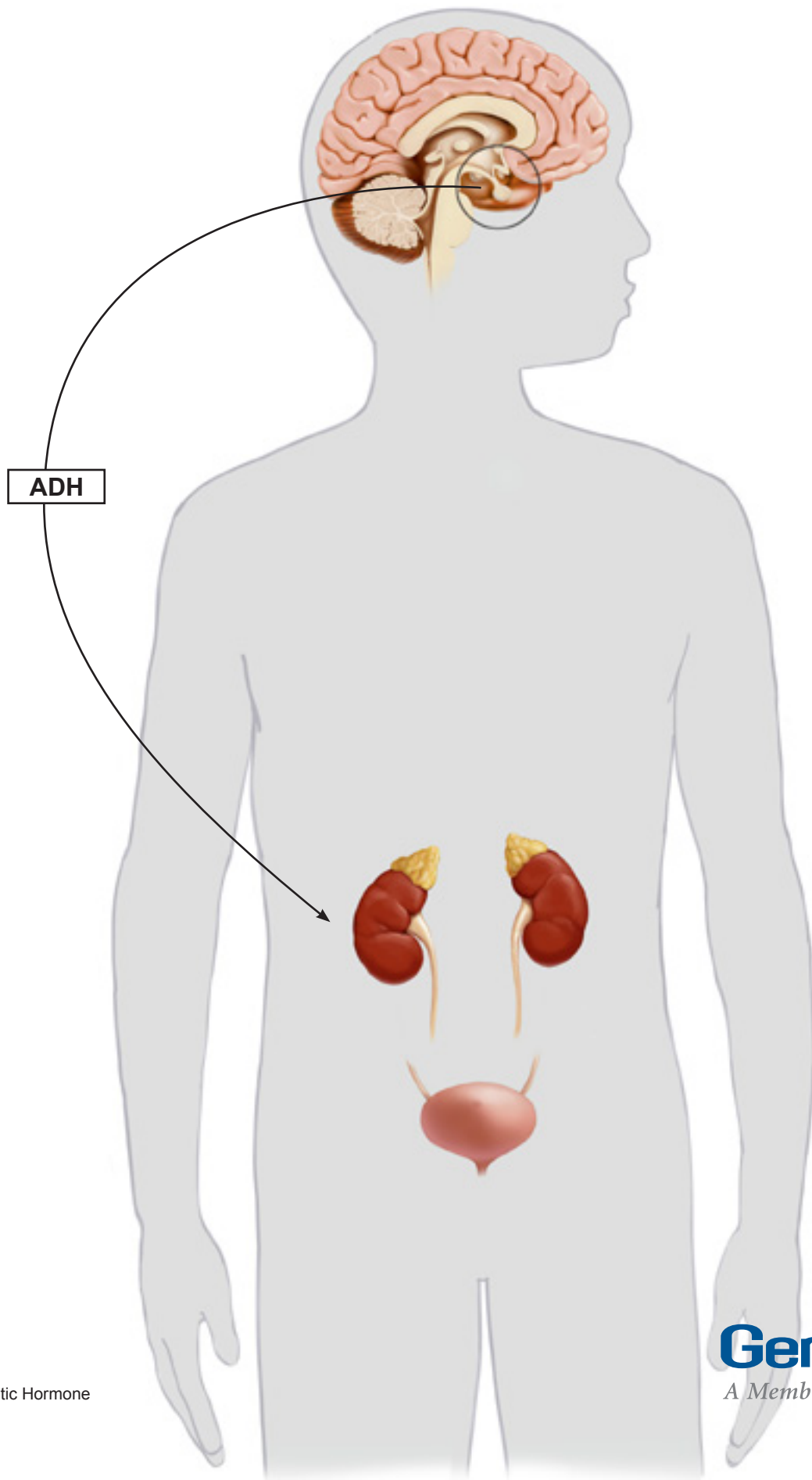


GH=Growth Hormone
IGF-1=Insulin-Like Growth Factor-1

Pancreas | Liver¹



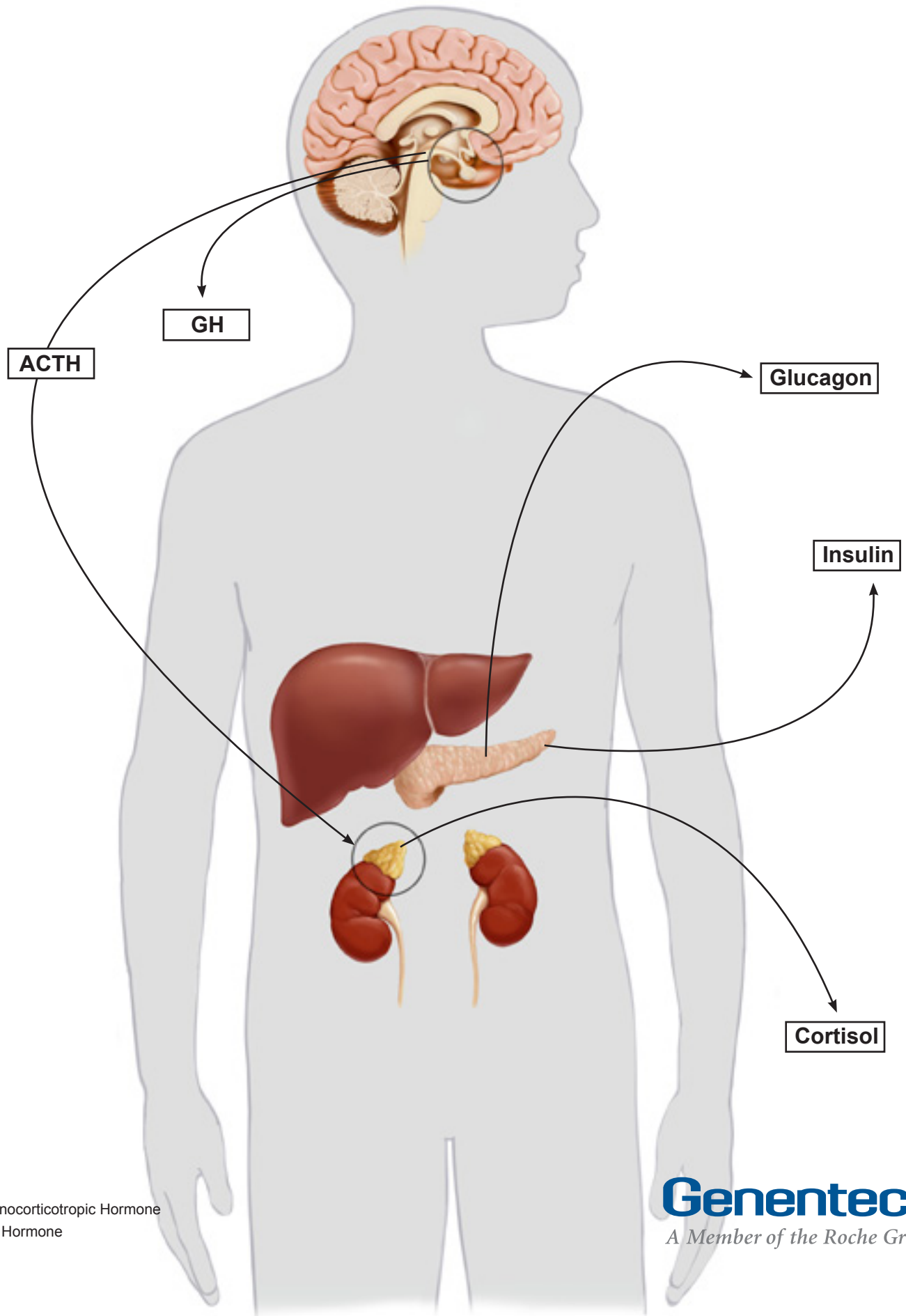
Posterior Pituitary Gland^{1,2}



ADH=Antidiuretic Hormone

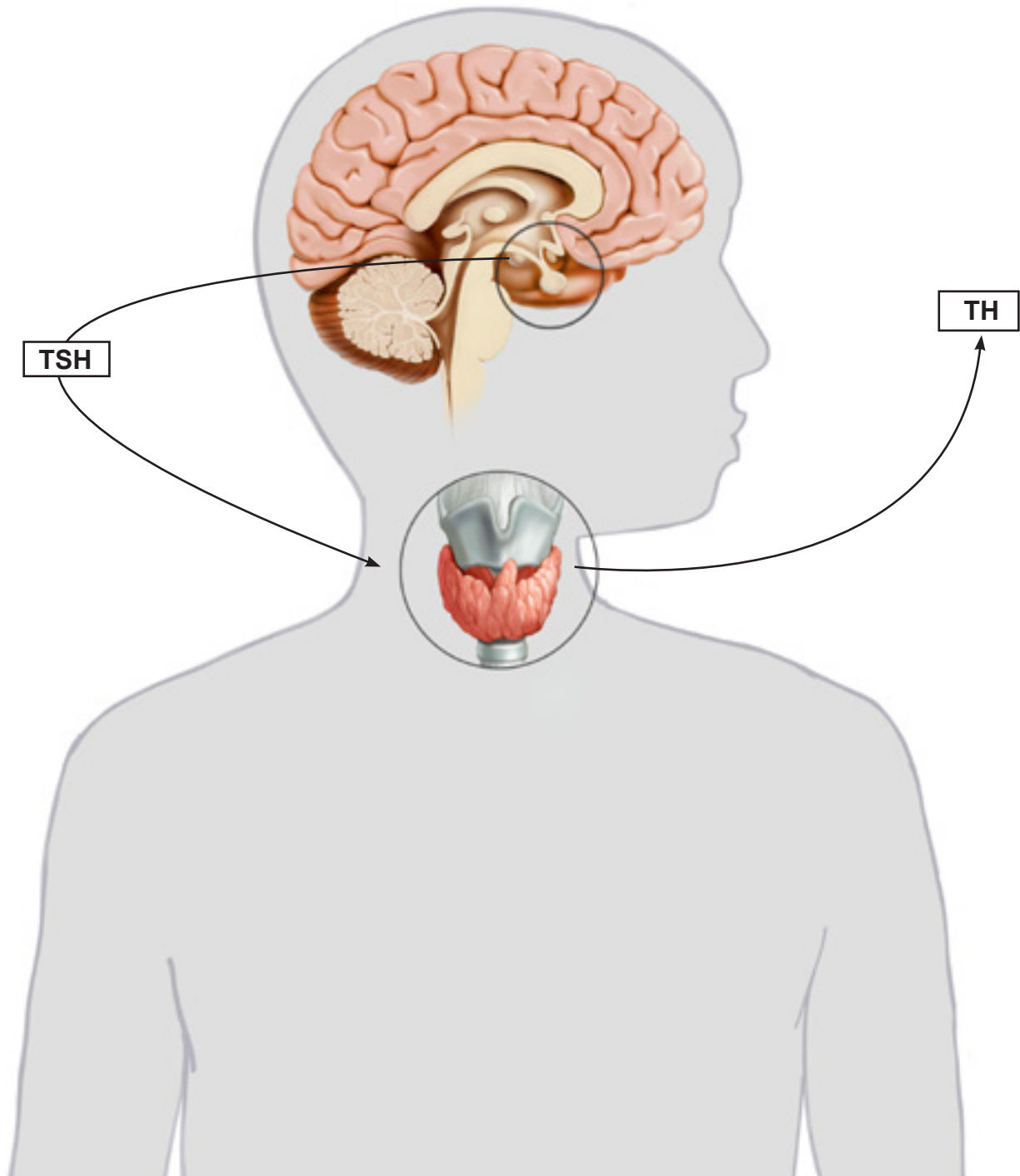
Genentech
A Member of the Roche Group

Glucose Metabolism^{1,2}



ACTH=Adrenocorticotrop Hormone
GH=Growth Hormone

Thyroid Gland¹



TH=Thyroid Hormone
TSH=Thyroid-Stimulating Hormone

References: 1. Hiller-Sturmhöfel S, Bartke A. The endocrine system: an overview. *Alcohol Health Res World*. 1998;22(3):153-164.
2. Babler E, Betts K, et al, eds. *Clinical Handbook of Pediatric Endocrinology*. 2nd ed. St. Louis, MO: Quality Medical Publishing, Inc. 2013.